

Cordova Bay Rd between Sayward Rd and Lochside Dr
February 25, 2020 To February 27, 2020



The data presented here is for information purposes only and should not be considered authoritative for construction, geotechnical, engineering, navigational, legal, or other site-specific uses. The information shared is owned by the Transportation Division of the Engineering Department at the District of Saanich. Accuracy is not guaranteed.

Start Date: 24-Feb-20
 Start Time: 0:00
 Station ID: M0012-04

Location 1: Cordova Bay Rd between Sayward Rd and Lochside Dr

Note:

DATE:	February 24, 2020		February 25, 2020		February 26, 2020		February 27, 2020		February 28, 2020		WK AVG		WK AVG	HOURLY
	MON		TUE		WED		THURS		FRI				CH 1+2	%
Time:	NB	SB	NB	SB	NB	SB	NB	SB	NB	SB	NB	SB		
12-1 AM			3	6	11	9	5	8			6	8	14	0.2%
1-2 AM			2	2	3	4	5	5			3	4	7	0.1%
2-3 AM			1	1	4	2	5	5			3	3	6	0.1%
3-4 AM			6	6	5	5	7	6			6	6	12	0.2%
4-5 AM			10	4	13	2	12	3			12	3	15	0.2%
5-6 AM			27	24	26	18	19	12			24	18	42	0.6%
6-7 AM			85	62	75	50	78	54			79	55	135	1.9%
7-8 AM			205	207	222	206	192	219			206	211	417	5.7%
8-9 AM			281	384	316	388	311	388			303	387	689	9.5%
9-10 AM			217	257	218	254	213	259			216	257	473	6.5%
10-11 AM			218	197	216	207	204	226			213	210	423	5.8%
11-12 PM			250	239	216	286	237	240			234	255	489	6.7%
12-1 PM			230	207	253	255	235	261			239	241	480	6.6%
1-2 PM			231	227	263	290	298	218			264	245	509	7.0%
2-3 PM			291	272	269	203	318	295			293	257	549	7.6%
3-4 PM			393	259	356	252	434	324			394	278	673	9.2%
4-5 PM			415	356	381	299	462	338			419	331	750	10.3%
5-6 PM			320	272	374	263	372	327			355	287	643	8.8%
6-7 PM			183	160	182	163	182	208			182	177	359	4.9%
7-8 PM			105	94	106	117	129	99			113	103	217	3.0%
8-9 PM			84	69	83	78	115	69			94	72	166	2.3%
9-10 PM			74	47	63	55	69	60			69	54	123	1.7%
10-11 PM			34	21	38	28	32	28			35	26	60	0.8%
11-12 AM			11	13	6	11	12	16			10	13	23	0.3%
LANES			3676	3386	3699	3445	3946	3668			3774	3500	7273	100.0%
TOTAL			7062		7144		7614				7280			
	MON		TUE		WED		THURS		FRI		WK AVG			

PEAK HOUR					TOTAL VEHICALS-PEAK PERIODS		2 HOUR PEAK INTERVALS				
MAX. 7 - 9 am PEAK HOUR	689	⇒	9.5%	between 8-9 AM	3469	⇒	6 HR TOTAL	2 HR AM (7 - 9 AM)			
MAX. 7 - 11 am PEAK HOUR	689	⇒	9.5%	between 8-9 AM	2499	⇒	4 HR TOTAL	VEH / HR	VEH / 2HR	2 HR %	
MAX. 11 am - 1 pm PEAK HOUR	489	⇒	6.7%	between 11-12 PM				7-8 AM	417	1106	15.2%
MAX. 11 am - 3 pm PEAK HOUR	549	⇒	7.6%	between 2-3 PM				8-9 AM	689		
MAX. 4 - 6 pm PEAK HOUR	750	⇒	10.3%	between 4-5 PM				2 HR NOON (11 - 1 PM)			
MAX. 3 - 6 pm PEAK HOUR	750	⇒	10.3%	between 4-5 PM				VEH / HR	VEH / 2HR	2 HR %	
								11-12 PM	489	970	13.3%
								12-1 PM	480		
								2 HR PM (4 - 6 PM)			
								VEH / HR	VEH / 2HR	2 HR %	
								4-5 PM	750	1393	19.2%
								5-6 PM	643		

Cordova Bay Rd between Sayward Rd and Lochside Dr

Northbound

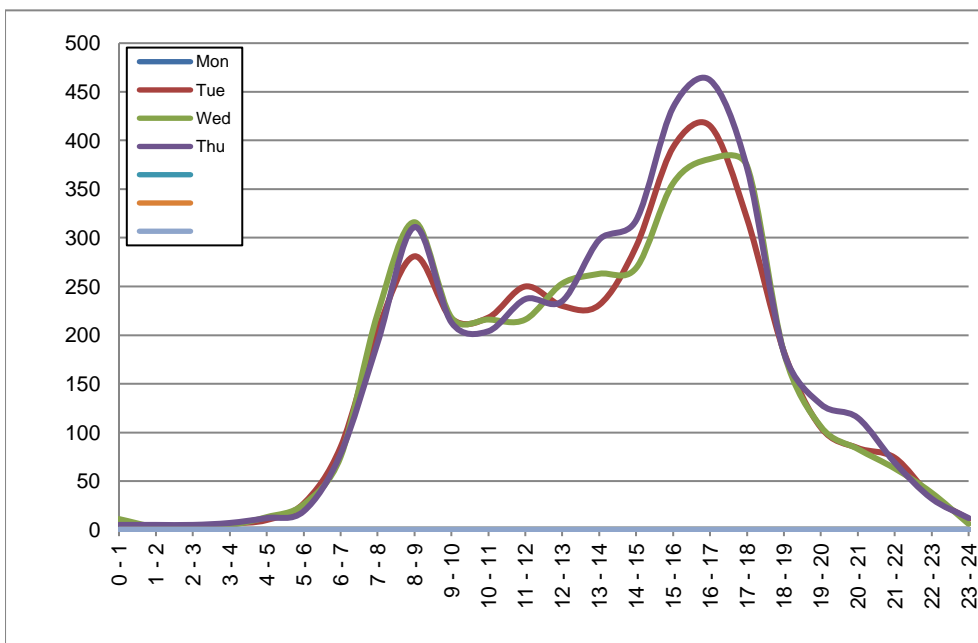
February 24, 2020 to February 27, 2020

Hourly Volumes

Time Period	Mon	Tue	Wed	Thu			
	Feb 24	Feb 25	Feb 26	Feb 27			
0 - 1		3	11	5			
1 - 2		2	3	5			
2 - 3		1	4	5			
3 - 4		6	5	7			
4 - 5		10	13	12			
5 - 6		27	26	19			
6 - 7		85	75	78			
7 - 8		205	222	192			
8 - 9		281	316	311			
9 - 10		217	218	213			
10 - 11		218	216	204			
11 - 12		250	216	237			
12 - 13		230	253	235			
13 - 14		231	263	298			
14 - 15		291	269	318			
15 - 16		393	356	434			
16 - 17		415	381	462			
17 - 18		320	374	372			
18 - 19		183	182	182			
19 - 20		105	106	129			
20 - 21		84	83	115			
21 - 22		74	63	69			
22 - 23		34	38	32			
23 - 24		11	6	12			
Day Total		3676	3699	3946			

15-Minute Volumes

Time Start	Mon	Tue	Wed	Thu				Time Start	Mon	Tue	Wed	Thu			
	Feb 24	Feb 25	Feb 26	Feb 27					Feb 24	Feb 25	Feb 26	Feb 27			
0:00		2	4	1				12:00		64	60	57			
0:15		1	3	2				12:15		63	65	66			
0:30		0	3	1				12:30		46	61	63			
0:45		0	1	1				12:45		57	67	49			
1:00		0	2	2				13:00		60	65	79			
1:15		1	0	0				13:15		53	57	66			
1:30		0	0	2				13:30		50	66	72			
1:45		1	1	1				13:45		68	75	81			
2:00		0	0	1				14:00		63	65	72			
2:15		1	2	2				14:15		67	69	81			
2:30		0	2	2				14:30		51	59	74			
2:45		0	0	0				14:45		110	76	91			
3:00		0	1	2				15:00		101	83	90			
3:15		2	0	2				15:15		104	98	94			
3:30		3	2	0				15:30		102	80	129			
3:45		1	2	3				15:45		86	95	121			
4:00		2	5	5				16:00		103	107	123			
4:15		2	3	3				16:15		110	82	124			
4:30		4	4	1				16:30		100	106	109			
4:45		2	1	3				16:45		102	86	106			
5:00		4	5	2				17:00		89	116	110			
5:15		6	5	4				17:15		89	84	113			
5:30		11	10	7				17:30		79	114	92			
5:45		6	6	6				17:45		63	60	57			
6:00		16	13	15				18:00		73	64	80			
6:15		17	14	13				18:15		46	48	56			
6:30		19	19	16				18:30		35	33	24			
6:45		33	29	34				18:45		29	37	22			
7:00		26	24	25				19:00		20	27	23			
7:15		47	53	44				19:15		36	35	48			
7:30		59	75	65				19:30		26	25	30			
7:45		73	70	58				19:45		23	19	28			
8:00		56	65	58				20:00		18	29	51			
8:15		66	82	56				20:15		30	26	29			
8:30		85	92	102				20:30		20	13	19			
8:45		74	77	95				20:45		16	15	16			
9:00		52	45	67				21:00		35	18	22			
9:15		49	62	49				21:15		14	21	22			
9:30		59	57	44				21:30		10	12	14			
9:45		57	54	53				21:45		15	12	11			
10:00		57	54	48				22:00		17	12	9			
10:15		57	59	47				22:15		5	14	13			
10:30		40	49	51				22:30		5	5	6			
10:45		64	54	58				22:45		7	7	4			
11:00		63	45	41				23:00		4	1	5			
11:15		55	50	56				23:15		3	1	5			
11:30		70	50	66				23:30		2	2	1			
11:45		62	71	74				23:45		2	2	1			



Site notes:

Cordova Bay Rd between Sayward Rd and Lochside Dr

Southbound

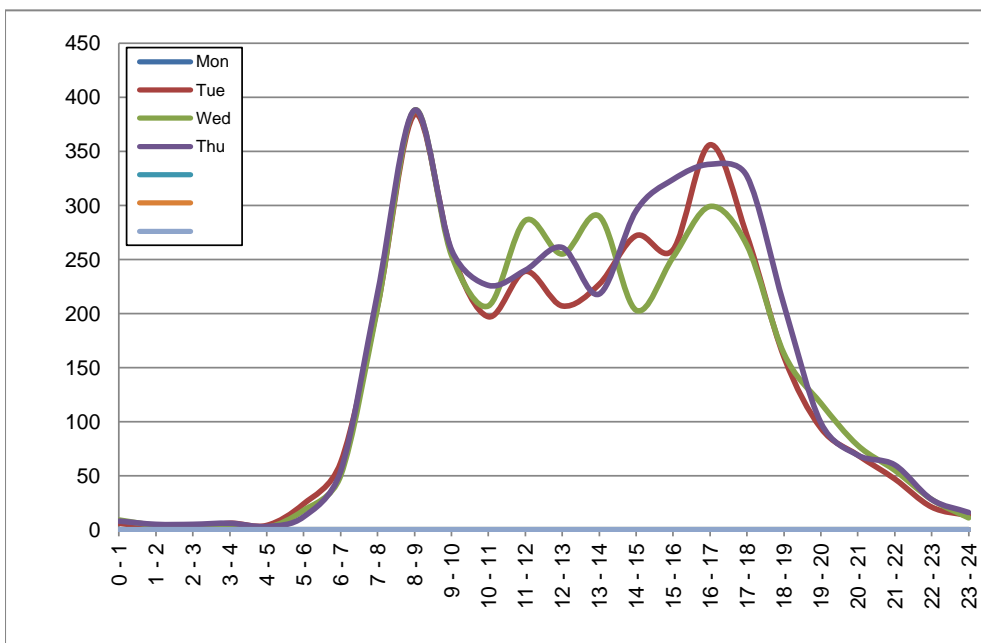
February 24, 2020 to February 27, 2020

Hourly Volumes

Time Period	Mon	Tue	Wed	Thu			
	Feb 24	Feb 25	Feb 26	Feb 27			
0 - 1		6	9	8			
1 - 2		2	4	5			
2 - 3		1	2	5			
3 - 4		6	5	6			
4 - 5		4	2	3			
5 - 6		24	18	12			
6 - 7		62	50	54			
7 - 8		207	206	219			
8 - 9		384	388	388			
9 - 10		257	254	259			
10 - 11		197	207	226			
11 - 12		239	286	240			
12 - 13		207	255	261			
13 - 14		227	290	218			
14 - 15		272	203	295			
15 - 16		259	252	324			
16 - 17		356	299	338			
17 - 18		272	263	327			
18 - 19		160	163	208			
19 - 20		94	117	99			
20 - 21		69	78	69			
21 - 22		47	55	60			
22 - 23		21	28	28			
23 - 24		13	11	16			
Day Total		3386	3445	3668			

15-Minute Volumes

Time Start	Mon	Tue	Wed	Thu				Time Start	Mon	Tue	Wed	Thu			
	Feb 24	Feb 25	Feb 26	Feb 27					Feb 24	Feb 25	Feb 26	Feb 27			
0:00		4	4	3				12:00		49	56	72			
0:15		0	4	3				12:15		47	66	56			
0:30		0	0	1				12:30		60	65	60			
0:45		2	1	1				12:45		51	68	73			
1:00		0	2	2				13:00		54	64	52			
1:15		0	0	0				13:15		50	71	49			
1:30		0	1	3				13:30		55	86	58			
1:45		2	1	0				13:45		68	69	59			
2:00		0	0	1				14:00		58	49	61			
2:15		0	0	1				14:15		59	57	77			
2:30		1	1	0				14:30		73	47	70			
2:45		0	1	3				14:45		82	50	87			
3:00		1	2	2				15:00		51	60	82			
3:15		0	0	3				15:15		56	52	69			
3:30		3	1	0				15:30		73	67	82			
3:45		2	2	1				15:45		79	73	91			
4:00		1	1	0				16:00		76	76	88			
4:15		2	0	2				16:15		88	69	75			
4:30		0	0	0				16:30		93	77	75			
4:45		1	1	1				16:45		99	77	100			
5:00		3	3	2				17:00		88	70	103			
5:15		8	4	4				17:15		74	76	68			
5:30		8	7	2				17:30		69	68	80			
5:45		5	4	4				17:45		41	49	76			
6:00		9	5	4				18:00		30	49	49			
6:15		3	12	10				18:15		52	36	62			
6:30		23	17	13				18:30		38	46	47			
6:45		27	16	27				18:45		40	32	50			
7:00		32	30	26				19:00		31	35	35			
7:15		43	46	44				19:15		25	28	25			
7:30		46	60	59				19:30		18	27	19			
7:45		86	70	90				19:45		20	27	20			
8:00		79	93	81				20:00		13	26	29			
8:15		99	108	113				20:15		17	23	18			
8:30		133	117	115				20:30		21	11	12			
8:45		73	70	79				20:45		18	18	10			
9:00		73	70	55				21:00		17	19	20			
9:15		59	57	66				21:15		11	14	14			
9:30		54	60	68				21:30		10	13	18			
9:45		71	67	70				21:45		9	9	8			
10:00		49	50	56				22:00		6	11	7			
10:15		43	61	67				22:15		4	8	6			
10:30		43	41	52				22:30		4	4	6			
10:45		62	55	51				22:45		7	5	9			
11:00		51	66	81				23:00		8	6	11			
11:15		61	76	57				23:15		2	2	2			
11:30		55	80	54				23:30		1	1	2			
11:45		72	64	48				23:45		2	2	1			



Site notes:

Vehicle Speed Summary

Saanich Engineering Department

Count Id: M0012-04

Filename: Cordova Bay Rd between Sayward Rd and Lochside Dr-Feb-2020.xlsm

Location: Cordova Bay Rd between Sayward Rd and Lochside Dr

Note:

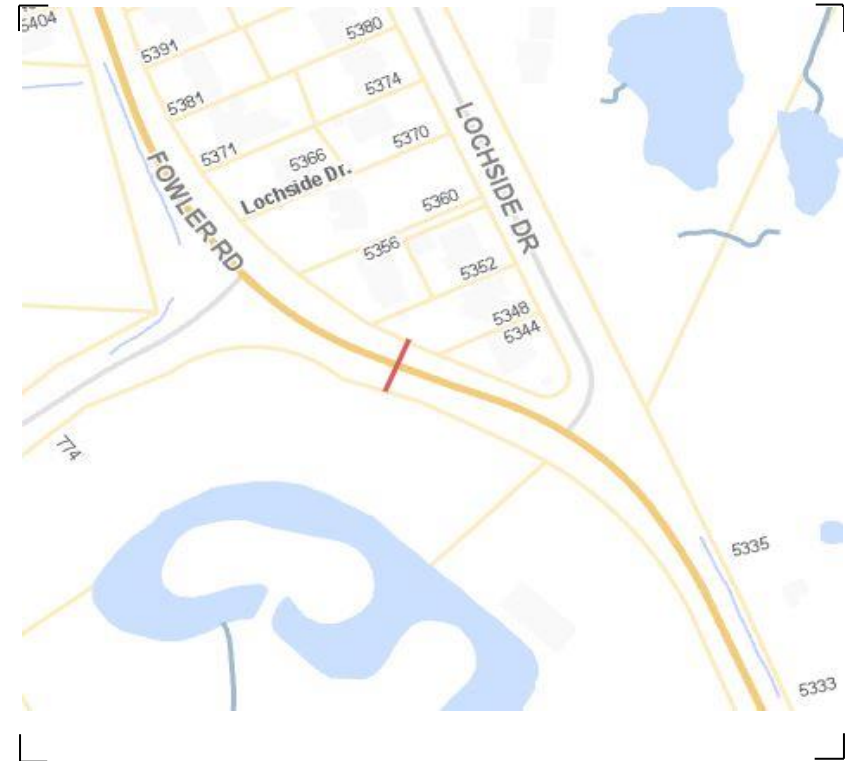
Direction: **North-South**

Dates: **February 25, 2020 To February 27, 2020**

Filtered data

AVG. SPEED	32 mph	52 km/h
50 % SPEED	32 mph	52 km/h
85 % SPEED	36 mph	58 km/h
95 % SPEED	39 mph	62 km/h

Location Map



Cordova Bay Rd between Sayward Rd and Lochside Dr

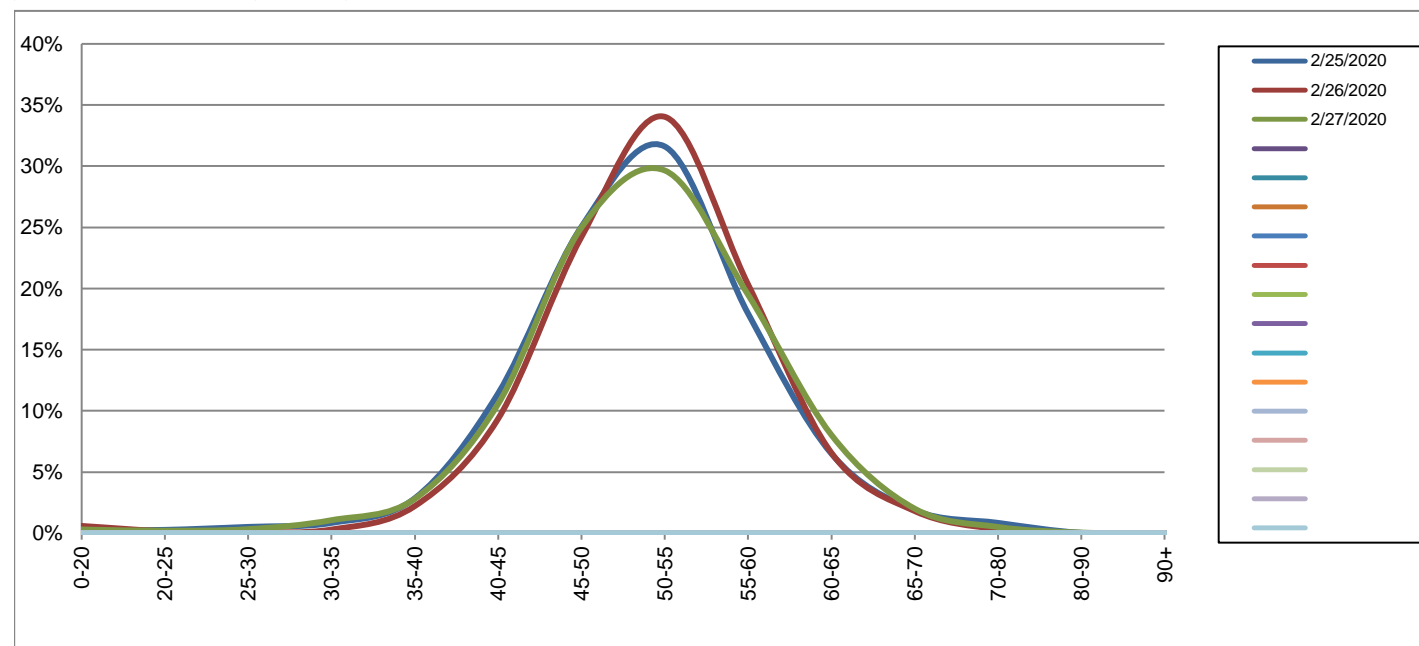
Northbound

February 25, 2020 to February 27, 2020

Daily Speed Bin Percentages														Daily Speed Bin Volumes														Total	Avg.	
Bin #	1	2	3	4	5	6	7	8	9	10	11	12	13	14	1	2	3	4	5	6	7	8	9	10	11	12	13	14	Volume	Speed
Bin Speeds	0-20	20-25	25-30	30-35	35-40	40-45	45-50	50-55	55-60	60-65	65-70	70-80	80-90	90+	0-20	20-25	25-30	30-35	35-40	40-45	45-50	50-55	55-60	60-65	65-70	70-80	80-90	90+		
2/25/2020	0.2%	0.3%	0.5%	0.8%	2.9%	11.4%	25.1%	31.6%	18.0%	6.5%	1.9%	0.8%	0.0%	0.0%	8	10	19	31	105	420	921	1162	660	239	69	31	1	0	3676	51
2/26/2020	0.6%	0.2%	0.1%	0.3%	2.2%	9.4%	24.2%	34.0%	20.3%	6.6%	1.8%	0.3%	0.0%	0.0%	22	6	3	11	82	346	896	1259	752	243	67	12	0	0	3699	52
2/27/2020	0.3%	0.2%	0.3%	1.1%	2.8%	10.6%	25.0%	29.7%	19.5%	8.0%	2.0%	0.5%	0.1%	0.0%	12	8	13	42	111	417	986	1170	769	317	79	20	2	0	3946	51
Total	0.4%	0.2%	0.3%	0.7%	2.6%	10.4%	24.8%	31.7%	19.3%	7.1%	1.9%	0.6%	0.0%	0.0%	42	24	35	84	298	1183	2803	3591	2181	799	215	63	3	0	11321	51

Speed Data Summary

Bin #	1	2	3	4	5	6	7	8	9	10	11	12	13	14	Total
Bin Speeds	0-20	20-25	25-30	30-35	35-40	40-45	45-50	50-55	55-60	60-65	65-70	70-80	80-90	90+	
Survey Total	42	24	35	84	298	1183	2803	3591	2181	799	215	63	3	0	11321
% Total	0.4%	0.2%	0.3%	0.7%	2.6%	10.4%	24.8%	31.7%	19.3%	7.1%	1.9%	0.6%	0.0%	0.0%	100%
Accumulated %	0.4%	0.6%	0.9%	1.6%	4.3%	14.7%	39.5%	71.2%	90.5%	97.5%	99.4%	100.0%	100.0%	100%	
Inverse Accum. %	99.6%	99.4%	99.1%	98.4%	95.7%	85.3%	60.5%	28.8%	9.5%	2.5%	0.6%	0.0%	0.0%	0.0%	
Average Speed	51 KM/H														



Site notes:

Cordova Bay Rd between Sayward Rd and Lochside Dr

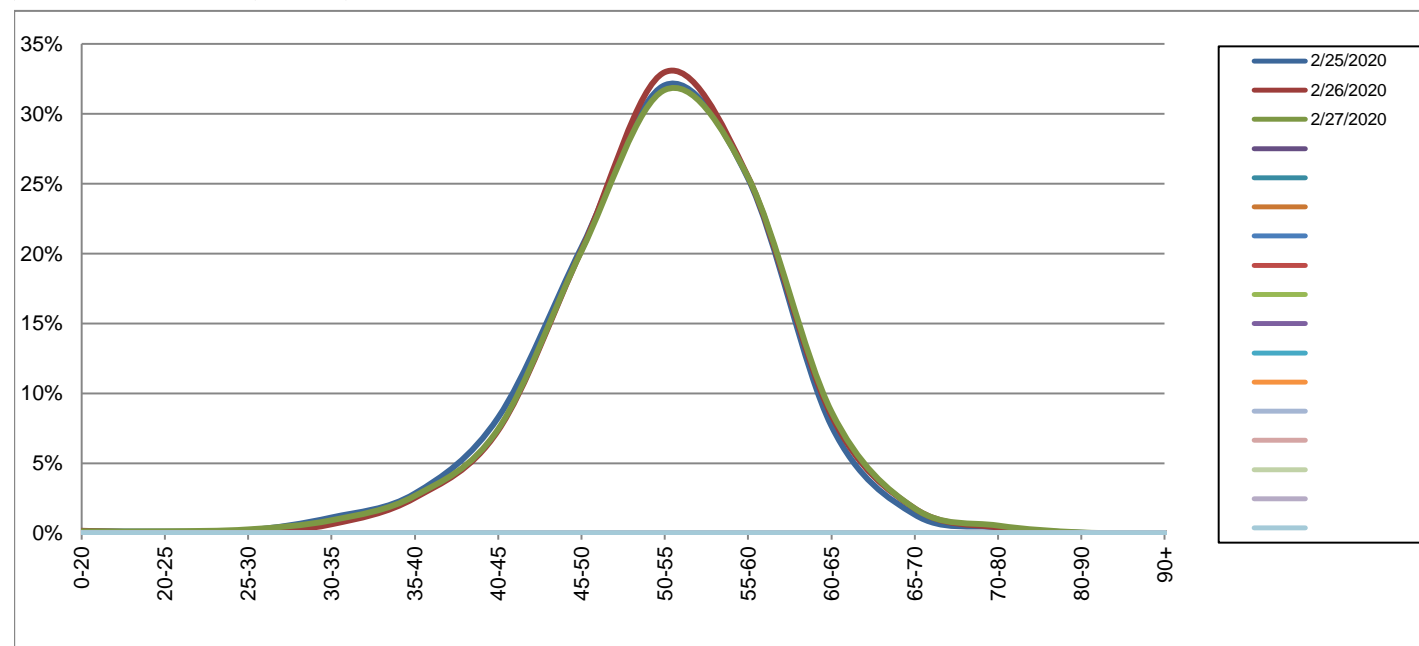
Southbound

February 25, 2020 to February 27, 2020

Daily Speed Bin Percentages														Daily Speed Bin Volumes														Total	Avg.	
Bin #	1	2	3	4	5	6	7	8	9	10	11	12	13	14	1	2	3	4	5	6	7	8	9	10	11	12	13	14	Volume	Speed
Bin Speeds	0-20	20-25	25-30	30-35	35-40	40-45	45-50	50-55	55-60	60-65	65-70	70-80	80-90	90+	0-20	20-25	25-30	30-35	35-40	40-45	45-50	50-55	55-60	60-65	65-70	70-80	80-90	90+		
2/25/2020	0.1%	0.1%	0.2%	1.1%	2.8%	8.3%	20.4%	32.0%	25.4%	7.7%	1.3%	0.4%	0.0%	0.0%	5	4	7	38	96	280	692	1085	859	260	45	14	1	0	3386	52
2/26/2020	0.2%	0.0%	0.0%	0.6%	2.5%	7.3%	20.2%	33.0%	25.5%	8.4%	1.8%	0.4%	0.0%	0.0%	6	1	0	22	87	253	697	1136	878	290	61	14	0	0	3445	53
2/27/2020	0.1%	0.1%	0.3%	0.9%	2.7%	7.4%	20.2%	31.7%	25.5%	8.7%	1.8%	0.5%	0.1%	0.0%	5	5	10	34	98	273	740	1163	934	319	65	20	2	0	3668	53
Total	0.2%	0.1%	0.2%	0.9%	2.7%	7.7%	20.3%	32.2%	25.4%	8.3%	1.6%	0.5%	0.0%	0.0%	16	10	17	94	281	806	2129	3384	2671	869	171	48	3	0	10499	52

Speed Data Summary

Bin #	1	2	3	4	5	6	7	8	9	10	11	12	13	14	Total
Bin Speeds	0-20	20-25	25-30	30-35	35-40	40-45	45-50	50-55	55-60	60-65	65-70	70-80	80-90	90+	
Survey Total	16	10	17	94	281	806	2129	3384	2671	869	171	48	3	0	10499
% Total	0.2%	0.1%	0.2%	0.9%	2.7%	7.7%	20.3%	32.2%	25.4%	8.3%	1.6%	0.5%	0.0%	0.0%	100%
Accumulated %	0.2%	0.2%	0.4%	1.3%	4.0%	11.7%	31.9%	64.2%	89.6%	97.9%	99.5%	100.0%	100.0%	100%	
Inverse Accum. %	99.8%	99.8%	99.6%	98.7%	96.0%	88.3%	68.1%	35.8%	10.4%	2.1%	0.5%	0.0%	0.0%	0.0%	
Average Speed	52 KM/H														



Site notes:

Cordova Bay Rd between Sayward Rd and Lochside Dr

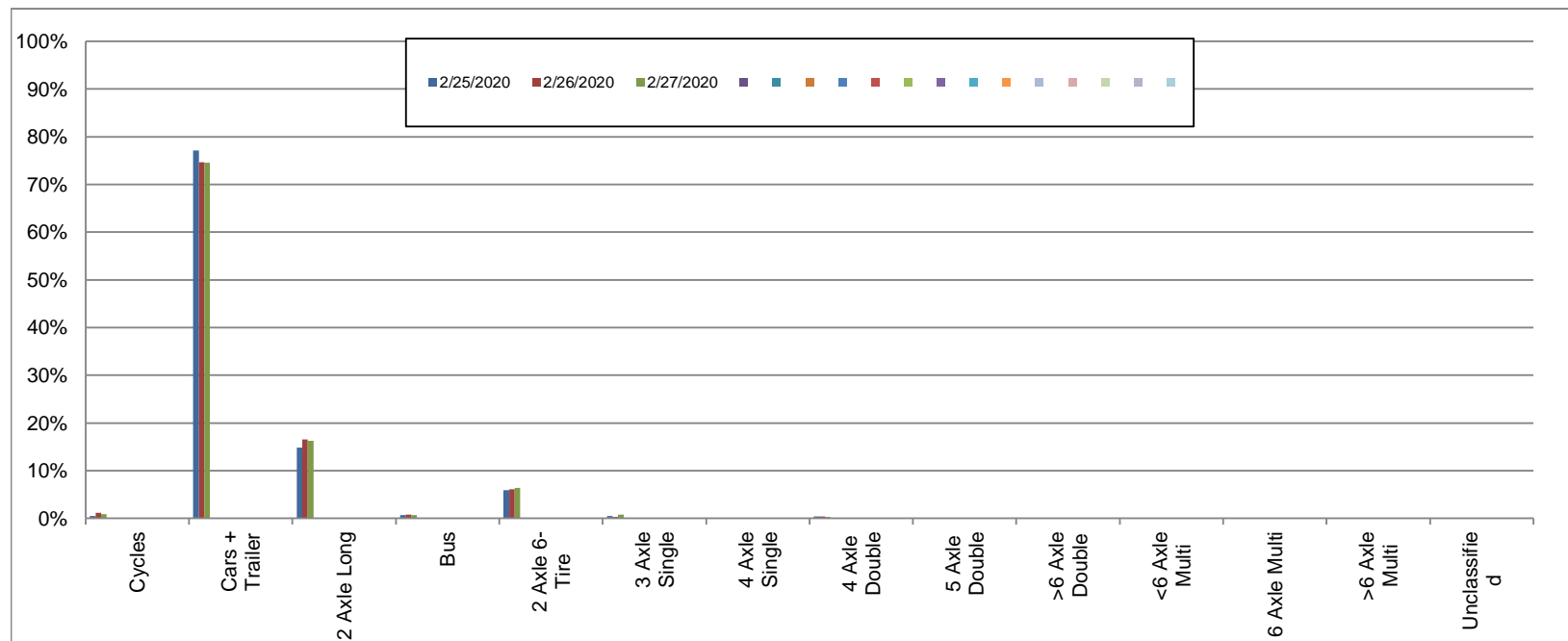
Northbound

February 25, 2020 to February 27, 2020

Daily Class Bin Percentages															Daily Class Bin Volumes											Total Volume			
Bin #	1	2	3	4	5	6	7	8	9	10	11	12	13	14	1	2	3	4	5	6	7	8	9	10	11		12	13	14
Bin Class	Cycles	Cars + Trailer	2 Axle Long	Bus	2 Axle 6-Tire	3 Axle Single	4 Axle Single	4 Axle Double	5 Axle Double	>6 Axle Double	<6 Axle Multi	6 Axle Multi	>6 Axle Multi	Unclassified	Cycles	Cars + Trailer	2 Axle Long	Bus	2 Axle 6-Tire	3 Axle Single	4 Axle Single	4 Axle Double	5 Axle Double	>6 Axle Double	<6 Axle Multi	6 Axle Multi	>6 Axle Multi	Unclassified	
2/25/2020	0.5%	77.1%	14.8%	0.7%	5.9%	0.5%	0.0%	0.4%	0.1%	0.1%	0.0%	0.0%	0.0%	0.0%	17	2834	545	25	217	18	1	14	2	2	0	0	0	1	3676
2/26/2020	1.1%	74.6%	16.6%	0.8%	6.1%	0.3%	0.0%	0.4%	0.0%	0.0%	0.0%	0.0%	0.0%	0.1%	42	2761	613	29	225	10	0	14	0	1	0	0	0	4	3699
2/27/2020	0.8%	74.6%	16.3%	0.7%	6.4%	0.8%	0.0%	0.3%	0.0%	0.0%	0.0%	0.0%	0.0%	0.1%	33	2942	643	27	252	31	1	11	1	0	0	0	0	5	3946
Total	0.8%	75.4%	15.9%	0.7%	6.1%	0.5%	0.0%	0.3%	0.0%	0.0%	0.0%	0.0%	0.0%	0.1%	92	8537	1801	81	694	59	2	39	3	3	0	0	0	10	11321

Class Data Summary

Bin #	1	2	3	4	5	6	7	8	9	10	11	12	13	14	Total Volume
Bin Class	Cycles	Cars + Trailer	2 Axle Long	Bus	2 Axle 6-Tire	3 Axle Single	4 Axle Single	4 Axle Double	5 Axle Double	>6 Axle Double	<6 Axle Multi	6 Axle Multi	>6 Axle Multi	Unclassified	Total Volume
Survey Total	92	8537	1801	81	694	59	2	39	3	3	0	0	0	10	11321
% Total	0.8%	75.4%	15.9%	0.7%	6.1%	0.5%	0.0%	0.3%	0.0%	0.0%	0.0%	0.0%	0.0%	0.1%	100%
Accumulated %	0.8%	76.2%	92.1%	92.8%	99.0%	99.5%	99.5%	99.9%	99.9%	99.9%	99.9%	99.9%	99.9%	100.0%	
Inv. Accum. %	99.2%	23.8%	7.9%	7.2%	1.0%	0.5%	0.5%	0.1%	0.1%	0.1%	0.1%	0.1%	0.1%	0.0%	



Classification Descriptions

Bin #	Bin Description
1	Motorcycles
2	Passenger cars, including those with recreational trailers
3	2-axle pick-ups, vans, and RVs, including those with recreational trailers
4	Buses
5	2-axle, 6-tire single units
6	3-axle single units
7	4-axle single units
8	3-axle or 4-axle double unit
9	5-axle double unit
10	6-, 7-, or 8-axle double unit
11	5-axle multiple unit
12	6-axle multiple unit
13	7-or-more-axle multiple unit
14	Vehicles that could not be classified

Site notes:

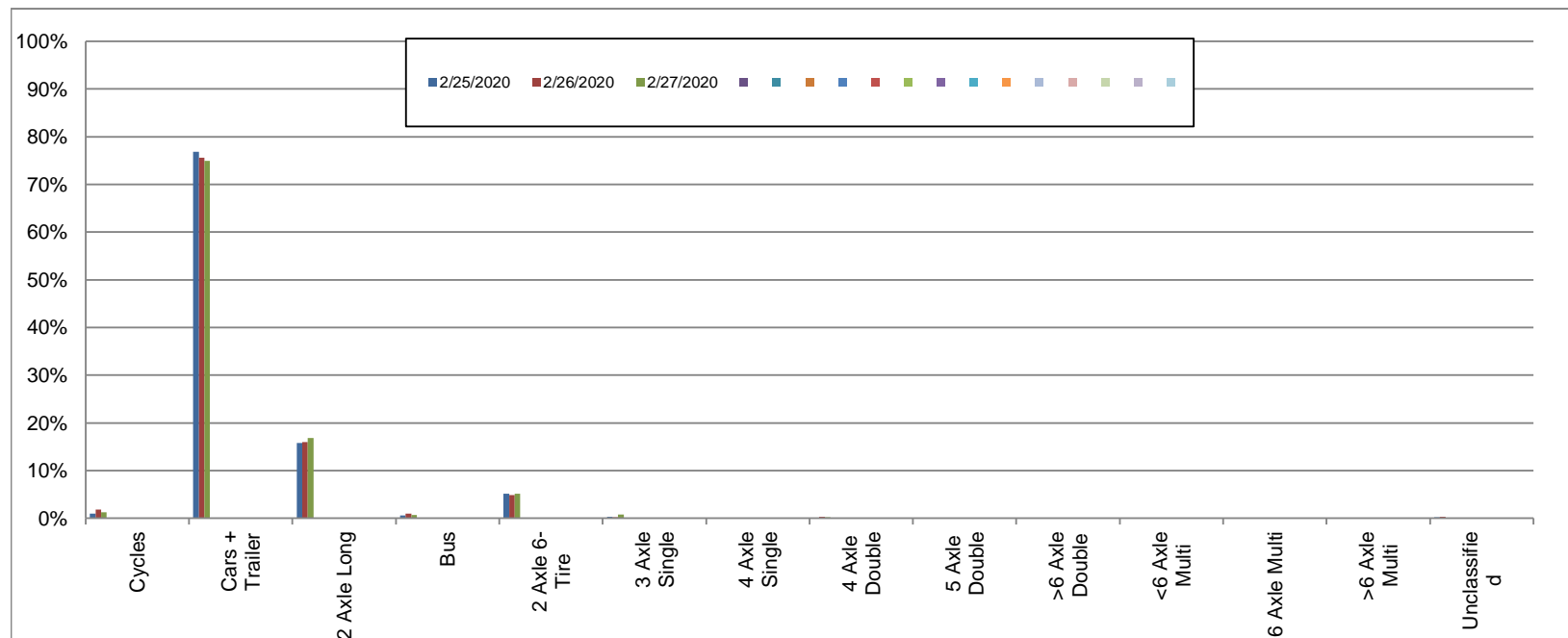
Cordova Bay Rd between Sayward Rd and Lochside Dr

Southbound
February 25, 2020 to February 27, 2020

Daily Class Bin Percentages															Daily Class Bin Volumes											Total Volume				
Bin #	1	2	3	4	5	6	7	8	9	10	11	12	13	14	1	2	3	4	5	6	7	8	9	10	11		12	13	14	
Bin Class	Cycles	Cars + Trailer	2 Axle Long	Bus	2 Axle 6-Tire	3 Axle Single	4 Axle Single	4 Axle Double	5 Axle Double	>6 Axle Double	<6 Axle Multi	6 Axle Multi	>6 Axle Multi	Unclassified	Cycles	Cars + Trailer	2 Axle Long	Bus	2 Axle 6-Tire	3 Axle Single	4 Axle Single	4 Axle Double	5 Axle Double	>6 Axle Double	<6 Axle Multi	6 Axle Multi	>6 Axle Multi	Unclassified		
2/25/2020	0.9%	76.8%	15.8%	0.6%	5.1%	0.3%	0.0%	0.1%	0.1%	0.0%	0.0%	0.0%	0.0%	0.2%	32	2602	535	20	174	11	1	3	2	0	0	0	0	0	6	3386
2/26/2020	1.8%	75.6%	16.0%	0.9%	4.9%	0.2%	0.0%	0.3%	0.0%	0.0%	0.0%	0.0%	0.0%	0.3%	62	2606	550	32	168	8	0	9	0	0	0	0	0	10	3445	
2/27/2020	1.3%	74.9%	16.8%	0.7%	5.2%	0.8%	0.0%	0.2%	0.0%	0.0%	0.0%	0.0%	0.0%	0.1%	47	2748	616	25	189	28	1	8	1	0	0	0	0	5	3668	
Total	1.3%	75.8%	16.2%	0.7%	5.1%	0.4%	0.0%	0.2%	0.0%	0.0%	0.0%	0.0%	0.0%	0.2%	141	7956	1701	77	531	47	2	20	3	0	0	0	0	21	10499	

Class Data Summary

Bin #	1	2	3	4	5	6	7	8	9	10	11	12	13	14	Total Volume
Bin Class	Cycles	Cars + Trailer	2 Axle Long	Bus	2 Axle 6-Tire	3 Axle Single	4 Axle Single	4 Axle Double	5 Axle Double	>6 Axle Double	<6 Axle Multi	6 Axle Multi	>6 Axle Multi	Unclassified	Total Volume
Survey Total	141	7956	1701	77	531	47	2	20	3	0	0	0	0	21	10499
% Total	1.3%	75.8%	16.2%	0.7%	5.1%	0.4%	0.0%	0.2%	0.0%	0.0%	0.0%	0.0%	0.0%	0.2%	100%
Accumulated %	1.3%	77.1%	93.3%	94.1%	99.1%	99.6%	99.6%	99.8%	99.8%	99.8%	99.8%	99.8%	99.8%	100.0%	
Inv. Accum. %	98.7%	22.9%	6.7%	5.9%	0.9%	0.4%	0.4%	0.2%	0.2%	0.2%	0.2%	0.2%	0.2%	0.0%	



Classification Descriptions

Bin #	Bin Description
1	Motorcycles
2	Passenger cars, including those with recreational trailers
3	2-axle pick-ups, vans, and RVs, including those with recreational trailers
4	Buses
5	2-axle, 6-tire single units
6	3-axle single units
7	4-axle single units
8	3-axle or 4-axle double unit
9	5-axle double unit
10	6-, 7-, or 8-axle double unit
11	5-axle multiple unit
12	6-axle multiple unit
13	7-or-more-axle multiple unit
14	Vehicles that could not be classified

Site notes: